

Perseus Commander Help File

Table of contents

Perseus Help	3
Installation	5
About	5
License	7
Requirements	7
Installing	8
Configuring and Operation	10
Connecting to the Device	10
FAQ & Troubleshooting	12
Connection Errors	12
HTML Help Viewer Display Issues	12
Error Codes	13
Contacting Optec Technical Support	13
Developer Information	14
Additional Resources	15
Optec Website	15
Optec Software Downloads	15
Optec User Group	15
Optec Support	15
ASCOM Website	15



Welcome to the Optec Perseus Help

The Perseus control program has been designed for use with the Perseus 4 port instrument selector. This package includes a control program and an ASCOM driver.

This help document is organized into the following chapters:

[Installation](#)

- ▶ [About](#)
- ▶ [License](#)
- ▶ [Requirements](#)
- ▶ [Installing](#)

[Configuring and Operation](#)


- ▶ [Connecting to the Device](#)

[FAQ & Troubleshooting](#)

- ▶ [Connection Errors](#)
- ▶ [HTML Help Viewer Display Issues](#)
- ▶ [Error Codes](#)
- ▶ [Contacting Optec Technical Support](#)
- ▶ [Developer Information](#)

[Additional Resources](#)

Revisions to this Help document

-  Rev 1.00 - 2015/04/24 initial release.

*Optec, Inc. makes no warranties either expressed or implied about **Perseus** Control software.*

Please note: These help files are sometimes updated. The latest version can always be found

online at:

<http://www.optecinc.com/astronomy/software/>

Installation



Chapter 1: Installation

- ▶ [About](#) - Background and capabilities of the Perseus control program and drivers
- ▶ [License](#) - The End-User License Agreement for the Perseus control program and ASCOM drivers (referred to as Software Package)
- ▶ [Requirements](#) - Software and Hardware requirements for use of the Software Package.
- ▶ [Installing](#) - How to install the Software Package.

About



Section 1.1 - About The Perseus Control Program

What is the Perseus Control Program?

Thank you for installing the **Perseus** control program. The control program is a stand-alone Windows program designed for testing, setting parameters, and operating the Optec **Perseus 4** port instrument selector.

ASCOM Compliance

Optec has also developed ASCOM drivers for the Perseus that allows the device to be used with other ASCOM-compliant software, using the switch interface. Visit the [Optec download page](#) to obtain the latest Perseus drivers. This is a Local Server driver, allowing multiple clients to be connected at the same time.



About The Perseus instrument selector

A great deal of information about the Perseus rotator can be found by visiting the [Perseus Webpage](#).

License



Section 1.2 - End-User License Agreement

By installing and using the Software Package, you agree to Optec's license terms:

PERSEUS COMMANDER, PERSEUS ASCOM DRIVER AND THESE MATERIALS ARE PROVIDED "AS-IS": NEITHER OPTEC, INC. , ITS AUTHORS, NOR ITS SUPPLIERS MAKES ANY WARRANTY, EXPRESS OR IMPLIED WITH RESPECT TO THE CONTENT OF THESE MATERIALS OR THE ACCURACY OF THE 4-Port PRODUCT, INCLUDING, WITHOUT LIMITATION, THE IMPLIED WARRANTIES OF MERCHANTABILITY OR FITNESS FOR A PARTICULAR PURPOSE. BECAUSE SOME STATES / JURISDICTIONS DO NOT ALLOW EXCLUSIONS OF IMPLIED WARRANTIES, THE ABOVE LIMITATION MAY NOT APPLY TO YOU.

IN NO EVENT SHALL OPTEC, INC. , THE AUTHOR, OR ITS SUPPLIERS BE LIABLE FOR ANY DAMAGES WHATSOEVER (INCLUDING, WITHOUT LIMITATION, DAMAGES FOR LOSS OF BUSINESS PROFITS, BUSINESS INTERRUPTION, LOSS OF BUSINESS INFORMATION, OR OTHER PECUNIARY LOSS) ARISING OUT OF THE USE OF OR INABILITY TO USE THIS PRODUCT, EVEN IF OPTEC, INC., HAS BEEN ADVISED OF THE POSSIBILITY OF SUCH DAMAGES. BECAUSE SOME STATES DO NOT ALLOW THE EXCLUSION OR LIMITATION OF LIABILITY FOR CONSEQUENTIAL OR INCIDENTAL DAMAGES, THE ABOVE LIMITATION MAY NOT APPLY TO YOU.

Optec, Inc. makes no warranties either expressed or implied about Perseus software.

Requirements



Section 1.3 - System Requirements

► **Perseus Control Program Requirements**

In order to use the Perseus control program, you will need the following software installed on your system:

- Windows XP, Vista, or 7
- Microsoft .NET Framework 4 or later
- ASCOM Platform 6.1 or later

Perseus commander is a very lightweight program, so if your computer meets the minimum system requirements for the software listed above and has a USB port available for connection to the Perseus commander, you should have no problem using the Perseus commander program.

Power Connection

The Perseus requires 12VDC to function properly. A suitable power power supply is provided with every purchase. Please contact Optec, Inc in the event that you require a replacement power supply.

Data Connection

The connection from the Perseus to the PC requires a RS 232 Serial line.

Installing



Section 1.4 - Installing And Opening Perseus Software

- **Download Software** - The software is available as a .zip file on the [Downloads](#) page of the Optec website. After downloading the correct zip file save it to a location on your hard drive and extract the files.
- **Run The Installer** - The zip folder you downloaded will contain two files. Double-click the file named **Setup.exe** to begin the install. Follow the instructions provided.
- **Location of Files** - The default location for the program files including the data files is in the **Program Files** folder under **Optec/Perseus**. The user cannot specify any other location for the files during the installation.
- **Opening Perseus Control** - After installation is complete, a shortcut will be automatically placed in the following location:

Start/All Programs/Optec/Perseus/

You may click this shortcut to open the control program.

-OR-

Double-click the **Perseus** shortcut on your desktop to start the program.



Chapter 2: Configuring and Operation

- ▶ [Connecting to the Device](#) - How to use the control program to connect to a Perseus

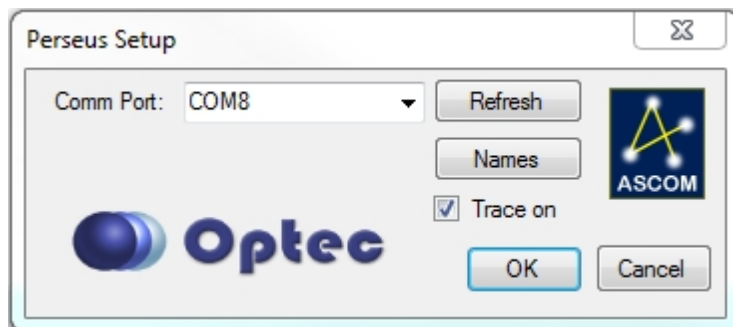
Connecting to the Device



Section 2.1 - Connecting To A Perseus

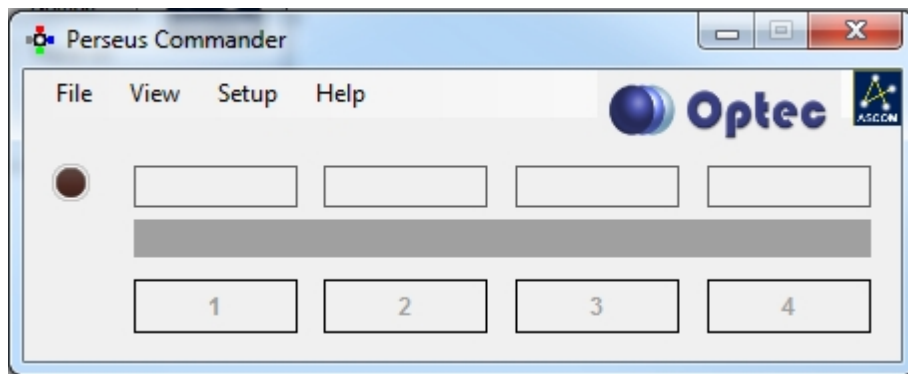
The low-level serial drivers required to communicate with the Perseus are automatically included with every installation of Windows. If you are using a RS 232 to USB line the driver will install from the INTERNET when the cable is first plugged in. Note this program uses an ASCOM local server driver so multiple clients can be connected at the same time.

- ▶ **Connect Your Switch** - The device shares the same *plug-and-play* connection interface as a typical mouse or keyboard. When the device is connected, the operating system will detect it and configure the driver automatically if necessary. Note this program uses an ASCOM local server driver so multiple clients can be connected at the same time.
- ▶ **Open The Control Program**
- ▶ **Connecting** - Once the program is open you need to select the COM port. Under setup hit the settings button to open the device. This interface should appear:

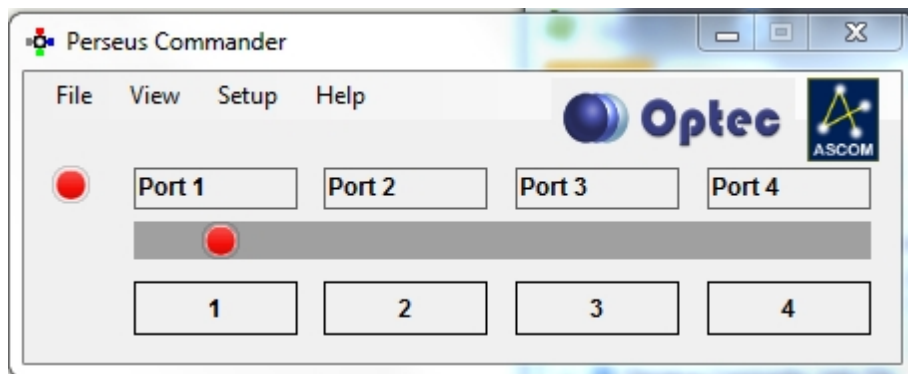


- ▶ Select the device Comm Port from the drop down box. If you do not see the device check your power and cables and then click the Refresh button.

- ▶ If you want to change the Names of your ports Click the Names button and follow the instructions.
- ▶ If you want verbose ASCOM logging (only needed if you are having problems with the software) check the Trace on box.
- ▶ Press OK when all of you settings are correct.
- ▶ Then to connect you can click the circle on the left main program screen or select connect from the file menu.



- ▶ Once connected the circle will light up red, the port names will appear and circle will appear over the current port.



- ▶ If any connected client (or the device switch) changes the port the indicator icon will move to the current port.
- ▶ Under View you can switch this to night vision mode or make this form appear on top of all other forms.

FAQ & Troubleshooting



Chapter 3: FAQ & Troubleshooting

- ▶ [Connection Errors](#) - How to resolve the most common connection errors
- ▶ [HTML Help Viewer Display Issues](#) - How to ensure that you can use the in-program Pyxis LE control program help file
- ▶ [Error Codes](#) - A description of how software and firmware errors are handled by the Pyxis LE control program and by the ASCOM drivers, as well as basic error message troubleshooting information.
- ▶ [Contacting Optec Technical Support](#) - Helpful procedural advice for contacting Optec technical support to ensure a speedy and accurate solution to your problem.
- ▶ [Developer Information](#) - How to obtain Pyxis LE development/API information.

Connection Errors



Section 3.1 - Connection Errors

As the Perseus uses Serial for its computer communication, connection with the Perseus should be very straightforward, as described in the [Connecting to the Device](#) portion of this manual.

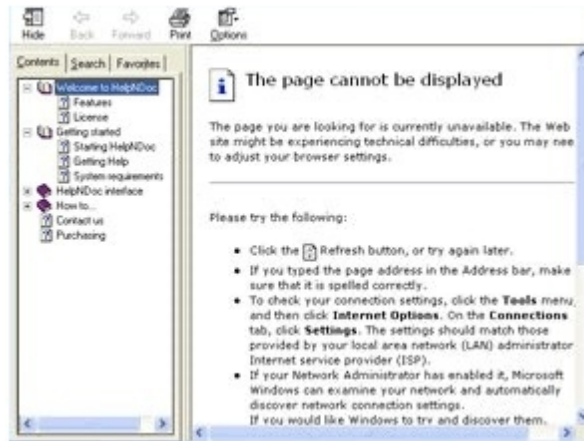
If you encounter problems connecting to your Perseus, first check the integrity of your Perseus's serial and power connections.

If this does not solve the problem, it is likely that the problem is not one that may be easily solved. Therefore, it may be best for you to simply [contact Optec](#) directly if you encounter a connection error.

HTML Help Viewer Display Issues



Section 3.2 - HTML Help Viewer Display Issues



If the Help Viewer used by the Perseus to view this help file displays an error message saying either : *"This action has been canceled"* or *"The page cannot be displayed"*, thus forcing you to view this help file via the Optec website, the following solution may help you resolve the issue:

- ▶ **Make A Local Copy** - This help viewer will only work when opened from your computer's local drive(s) (i.e. the C:\ Drive as opposed to a network path or mapped network drive). Find the PerseusHelp.chm file in your Perseus installation and open it from a local drive.

If this does not work, your best solution is to simply continue using the Web-based help file that, since you are reading this article, you are presumably already using.

Error Codes



Section 3.3 - Perseus Error Troubleshooting

If the Perseus encounters an error condition, an internal error state will be set. The Perseus Control program and ASCOM drivers will translate these error codes into a meaningful error message to inform the user of the problem in plain terms.

If you encounter a recurring error with no apparent solution, we suggest unplugging the rotator's USB and power cables and plugging it back in. This will reset the device and hopefully remove the source of the error.

If this tactic does not work, we also suggest restarting your computer and your control program to determine if the problem is occurring purely in the controlling PC.

If the error is still present, we recommend contacting Optec directly.

Contacting Optec Technical Support



Section 3.4 - Contacting Optec Technical Support

If you encounter any problems, errors, or questions about using the Perseus or control software that are not addressed by this owner's manual, the recommended next step is to contact [Optec Technical Support](#) for assistance.

However, providing certain resources when contacting Optec will greatly increase the speed and completeness with which your problem is solved. When using email, these resources should be included in text or spreadsheet files attached to the email. When contacting Optec by phone, simply have the documents available for ready access, as our technical support team may need you to refer to them. The resources you will need are as follows:

- ▶ **Description of Your Problem** - Naturally, to solve a problem, Optec tech support must know what the symptoms of the problem are.
- ▶ **How The Problem Occurs** - If there is a specific procedure required for the problem to appear, make a note of the steps for doing so.
- ▶ **Text Of Your Error** - If your problem is related to an error message received in your control program, you should retrieve a verbatim copy of the error message. Since the text of the error may not be selectable, you should instead select the error message box and press **Ctrl +C** to copy the entire text of the message box to the Windows clipboard.

Developer Information



Section 3.5 - Developer Information

As this program uses the ASCOM Switch driver a direct API is not provided. Contact [Optec](#) for details about the ASCOM driver.

Additional Resources



Chapter 5: Other Resources

There are many resources on the Internet to help you use the Perseus. We recommend visiting the [Optec website](#) first.

If unable to connect to the Internet, or with any other questions at all, please feel free to contact Optec Support by telephone at:

- ▶ Optec Support: 616-897-9351