

MODEL SSP-4

SOLID-STATE INFRARED PHOTOMETER

TECHNICAL MANUAL FOR

THEORY OF OPERATION AND OPERATING PROCEDURES

 ***OPTEC, Inc.***

OPTICAL AND ELECTRONIC PRODUCTS

sales@optecinc.com
<http://www.optecinc.com>

199 Smith St.
Lowell, MI 49331
U.S.A.
(616) 897-9351
(616) 897-8229 FAX
(888) 488-0381 Toll-Free



Figure 1-1. SSP-4 Solid-State Infrared Photometer shown with TCF-S Focuser.

TABLE OF CONTENTS

Revision 1 – June 2010

<i>Section</i>		<i>Page</i>
1.0	INTRODUCTION	1
2.0	THEORY OF OPERATION.....	4
	2.1 Basic Physical Characteristics	4
	2.2 The Detector.....	5
	2.3 Detector/Electrometer Design	5
	2.4 Signal Processing	6
3.0	OPERATING PROCEDURE	8
	3.1 Check-Out List	8
	3.2 Using the Photometer	8
	3.3 The 2-Button Interface	9
	3.4 Calibration and Adjustments	9
4.0	PC SERIAL INTERFACE AND COMMANDS	12
	4.1 PC (RS-232) Serial Communications	12
	4.2 Connecting the SSP-4 to the PC	12
	4.3 Communications Protocol	12
5.0	TROUBLE-SHOOTING GUIDE	16
6.0	SPECIFICATIONS	18
7.0	J & H FILTERS	19

APPENDICES

A	InGaAs Photodiode	A-1
B	Wiring Diagram	B-1
C	Component Layout & Circuit Diagrams	C-1
D	Sample Data Entry Form	D-1

LIST OF FIGURES

<i>Figure</i>		<i>Page</i>
1-1	SSP-4 Solid-State Infrared Photometer with TCF-S focuser	cover
1-2	SSP-4 System Components	2
2-1	Cross-sectional view of the SSP-4	3
2-2	Detector/Electrometer Circuit	6
2-3	Functional Signal Processing Diagram	7
2-4	Sensitivity of SSP-4 with 10" Telescope	8
3-1	Front Panel Controls	9
3-2	2-Button Interface Flow Diagram	11
7-1	J & H Filter Specifications	20

LIST OF TABLES

<i>Table</i>		<i>Page</i>
2-1	Physical and Electrical Characteristics of the Model G5851-203	5
4-1	Enter SSP-4 Serial Command	14
4-2	Set Gain Command	14
4-3	Set Integration Time Command	15
4-4	Start Count Command	15
4-5	Select Detector Temperature Command	16
4-6	Get Detector Temperature Command	16
4-7	Exit Serial Mode Command	16

SECTION 1.0

INTRODUCTION – a personal history by Gerald Persha

The SSP-4 IR photometer has a long history at Optec. In 1984 a prototype unit was first designed and constructed using an uncooled Lead-Sulfide photoconductive cell from Hamamatsu. The system used a chopper to stabilize the temperature drift and allow for long integration times. Considering the available electronics and IR detectors at the time, this instrument held much promise for small observatories attempting JHK photometry.

The prototype instrument was first demonstrated to an interested group of astronomers and amateurs on the night of August 17, 1984 at the James C. Veen Observatory. The event was the culmination of a symposium on “Near-IR and Solid-State Photometry” hosted by Russell Genet and myself as part of the I.A.P.P.P. organizational and educational efforts. The name of the observed star escapes me but a signal was detected to the amazement and joy of all in attendance. Unfortunately, the joy was short lived as the arm flailing of my soon to be ex-wife knocked a can of coke into the electronic works of the instrument bringing the demonstration to a sticky and bitter end. Events in the development of new computer controlled telescopes, photometers and visibility related instruments directed the efforts of Optec into other areas for the rest of 80s and 90s and the SSP-4 was shelved.

Since Optec had already developed the models SSP-1, 2 and 3 photometers, it was natural to name this instrument the SSP-4. The SSP-5 and 7 were years away from development and the defunct SSP-6 is a story for another time. Since 1984, the SSP-4 project notebook and prototype remains had sat undisturbed on a crypt-like shelf at Optec.

Seventeen years later in August of 2001, I received a communication from Dr. Douglas West about his desire to have an IR photometer manufactured. At first I dismissed it but his persistence, knowledge of new detectors pertaining to the subject and this lingering unfinished business in my life made me reconsider this photometer. Through his efforts in organizing a serious group of astronomers both amateur and professional, a new and improved SSP-4 photometer was proposed and designed using new technology and detectors.

The relatively new InGaAs PIN photodiodes on the market were designed for the fiber optics communication market and have reached very high performance levels compared to the IR detectors of 1984. It is now possible to build an IR photometer, which will allow a great many stars to be observed accurately in the J (1250nm) and H (1650nm) bands. Unfortunately however, the characteristics of the detector material do not allow the K band at 2200nm to be observed.

Without the hindrance from my ex-wife, the new SSP-4 was developed, tested, and finally brought to market. The sequence of SSPs is nearly complete. Enjoy.

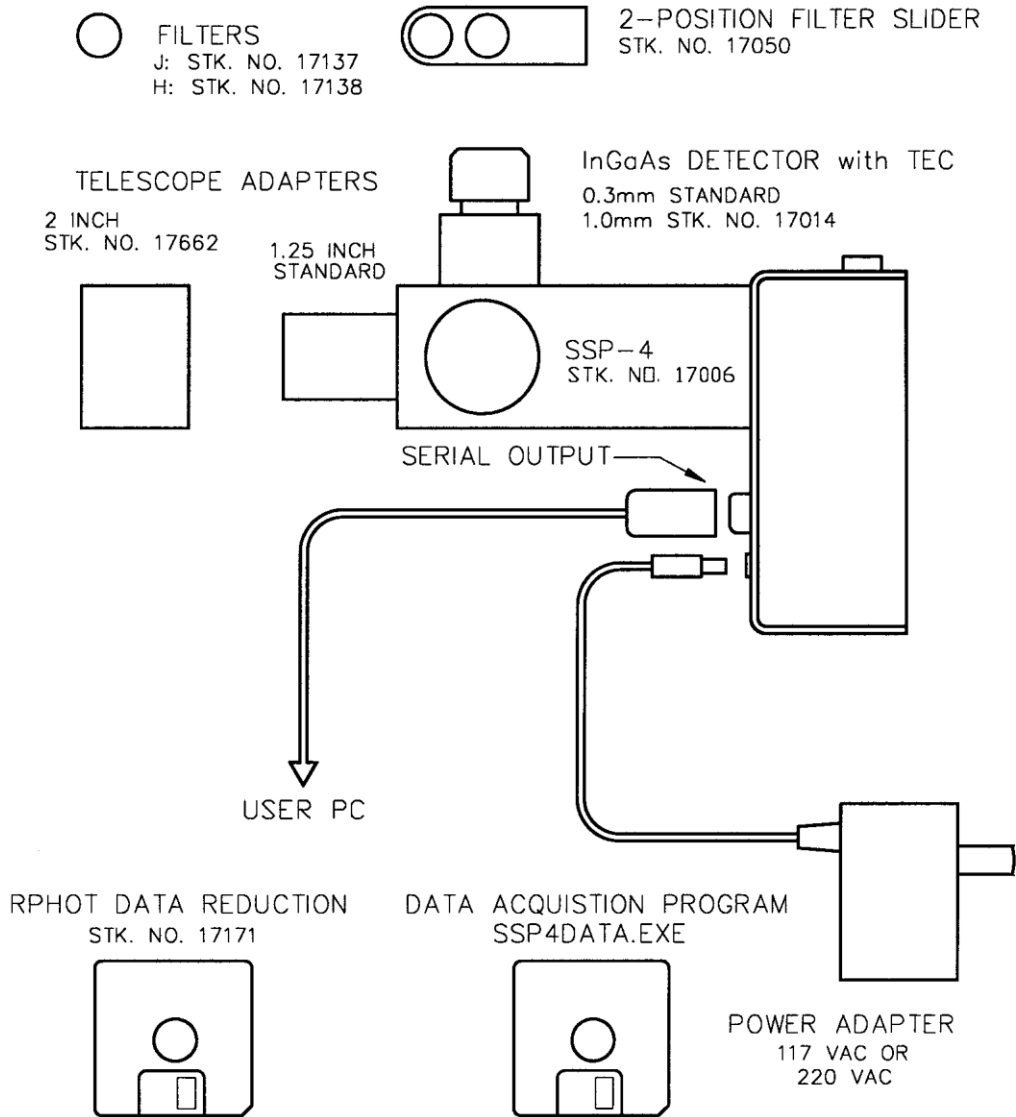


Fig. 1-2. SSP-4 System Components

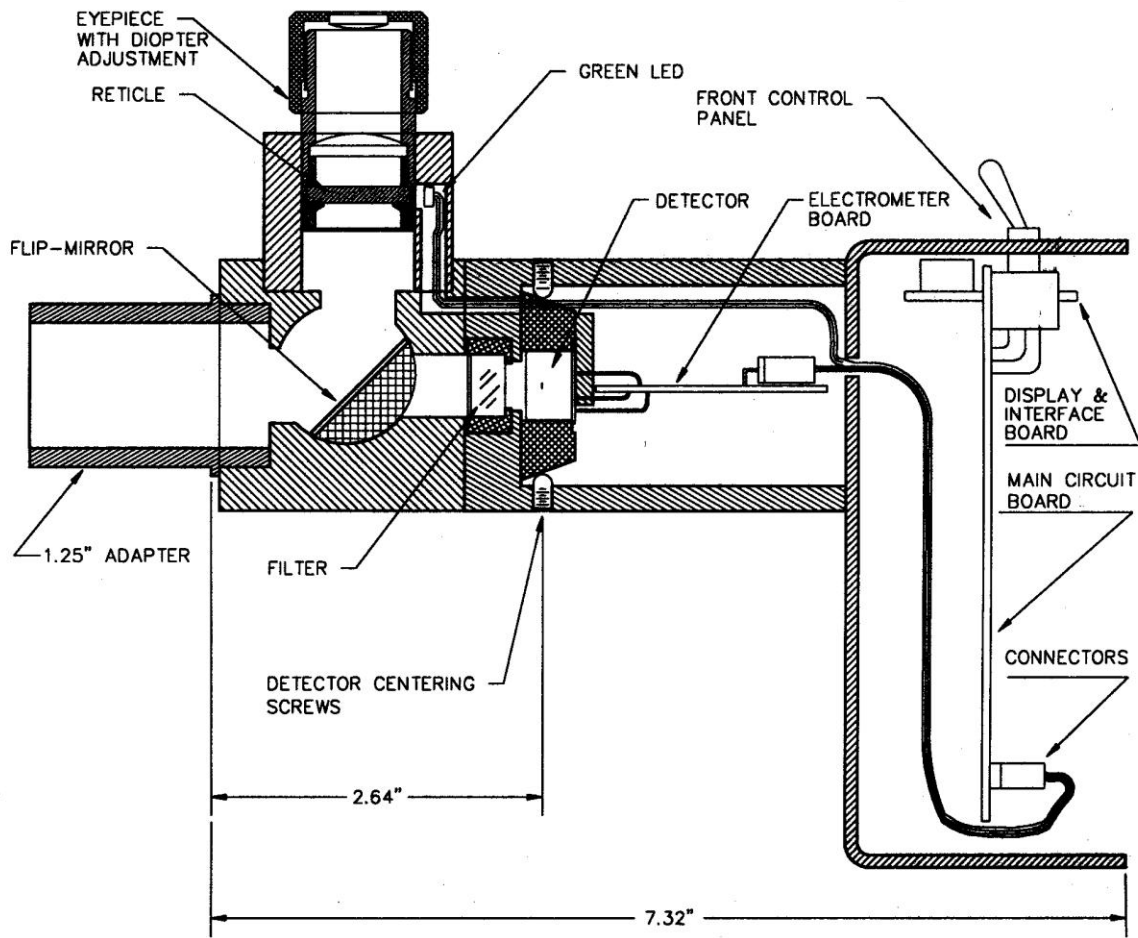


Fig. 2-1. Cross-sectional view of the SSP-4

SECTION 2.0

THEORY OF OPERATION

2.1 BASIC PHYSICAL CHARACTERISTICS

Figure 2-1 shows a cross-sectional view of the SSP-4 photometer. Light enters the photometer through the 1.25-inch telescope adapter and is directed either to the focusing eyepiece or the detector by means of a flip-mirror. The focusing eyepiece consists of a 1-inch focal length Ramsden type optic and a reticule with a precisely scribed ring that defines the detector field of view. A green LED illuminates the reticule from the side. A reticule diameter of 0.3mm is standard for the instrument but a 1.0mm is available for the optional 1.0mm detector. After a star is centered in the ring, the flip mirror is rotated to expose the detector. It is important to note that, unlike a photo multiplier system, the image of the star falls on the detector plane; a Fabry lens is not used.

A two-position filter slider is mounted between the flip mirror and the detector. Any pair of filters selected by the user before delivery can be mounted in the slider. Since the slider is easily pulled out of the unit, sliders with other combinations of filters can be inserted. For most variable star work, a single slider with J and H filters is recommended. Because of the wide and deep atmospheric absorption bands that lie within the spectral sensitivity of this detector, observing without a filter in place is not recommended.

The detector and electrometer are rigidly mounted behind the filter slider on an X-Y adjustable dovetail bracket. Accurate alignment of this bracket on an optical bench insures that the sensitive area of the detector matches the stellar field as defined by the reticule in the focusing eyepiece. Detector diameters of 0.3 and 1.0 mm are available with the 0.3 mm size considered best for most telescopes with focal lengths in the range of 50 to 150 inches.

The electrometer amplifies the current from the photodiode by a factor of 1×10^9 and is analogous to the operation of a photo multiplier tube. From the electrometer amplifier, the signal is then routed to the voltage-to-frequency converter for final processing into counts based on a 1, 5, 10 or 30 second gate time interval. The resulting count is then read from the four-digit readout on the front panel. Under PC control using SSP4DATA.EXE nearly any integration time can be chosen with 0.01 second resolution from 1 to 60 seconds.

Control of the instrument is possible either through the front panel two-button interface with output shown on a 4-character display or through a serial connection to a PC running our SSP4DATA.EXE interface program. Most all functions of the instrument are accessible with the two-button interface so that observations can be made with only a data logging pad and pencil.

2.2 THE DETECTOR

The detector used in the SSP-4 is a model G5851 manufactured by Hamamatsu Corporation. This unit can be classified as an InGaAs-PIN photodiode, which offers the highest possible shunt resistance value (R_s) resulting in a very low noise current when used in the photovoltaic mode. See Appendix A for complete description of this detector.

The detector is normally operated in a cooled state down to -40°C using a two stage thermoelectrically Peltier cooler. This decreases thermal noise from the detector and increases shunt resistance, which reduces the noise voltage contribution from the preamp from swamping the total noise budget. At room temperature the shunt resistance is under $1\text{M}\Omega$ and over $200\text{M}\Omega$ at -40°C . The operating temperature is made stable by a feedback system using an integrated thermistor mounted within the detector package.

Size	TO-8 can
Active Diameter	0.30 mm, 1.00mm optional
Spectral Range	900 to 2050 nm
Peak Response	1.2 A/W at 1950 nm
Normal Operating Temp.	-35°C
Shunt Resistance	$>0.2\text{ G}\Omega$ at -35°C
Noise Equivalent Power	$2 \times 10^{-14}\text{ W}/\sqrt{\text{Hz}}$ at -35°C

Table 2-1. Physical and Electrical Characteristics of the Model G5851-203

2.3 DETECTOR/ELECTROMETER DESIGN

The detector/electrometer circuit is the heart of the SSP-4 photometer and its design is a matter of optimizing both key elements as a single working unit.

Figure 2-2 shows the basic current-to-voltage amplifier configuration used in the SSP-4. Photocurrent from the detector is balanced by an equal current in the feedback resistor, but flowing in the opposite direction so that the inverting input is kept near zero potential. The output voltage is thus:

$$E_{\text{out}} = -R_f \times I_s$$

where R_f is the feedback resistance and, in the case of the SSP-4, is equal to 1 G ohm (1×10^9). The photocurrent from the photodiode is I_s .

Of course, the gain stability of this circuit is highly dependent on the resistance stability of the feedback resistor. Fluctuations of its value due to temperature changes could cause gain errors during observations, which are especially objectionable when all-sky photometry is done. The special resistor used has a temperature coefficient of 200 ppm/°C which is extremely low for a resistor of its size and

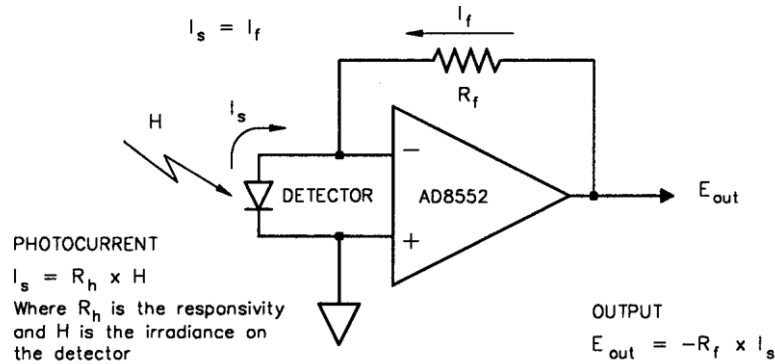


Figure 2-2. Detector/Electrometer Circuit

rating. Thus, a 20°C drop in temperature during the night, which is not uncommon, would cause a 0.004 magnitude error in electrometer gain. Even though this error source can be safely ignored, temperature effects on the responsivity of the detector and passbands of the filters also have to be considered when extreme temperature changes do occur.

At the center of the H band (1650nm), the detector responsivity is close to 1 A/W (amp/watt) of incident power. Thus, the output voltage from the preamp is equal to

$$E_{out} = P * 1 \times 10^9 \text{ V/W}$$

where P is the incident power on the detector in watts. Of course, the maximum output from the electrometer is limited to its power supply rail of about 2.7 volts.

Since extremely small currents are amplified, surface leakage currents may affect the overall accuracy of the detector/electrometer circuit. To protect against this, the finished circuit is baked at an elevated temperature in a vacuum dessicator for several days before it is heavily coated with a silicon sealant that has a very high bulk resistance. During the cure time, which also may last several days, the finished circuit is stored in a vacuum dessicator until mounted in the SSP-4.

2.4 SIGNAL PROCESSING

The voltage signal from the electrometer amplifier is processed by the voltage-to-frequency converter to a frequency that is directly proportional to the input voltage. It is extremely

linear, resulting in laboratory measured correlation coefficient using a least squares regression of $r = 0.99995$. There is an offset adjustment on the front control panel that allows the user to select the output count for zero input light or dark count. It is important to set this to a positive count of around five a gain setting of 1 and a 1 second integration time. This insures that if the electrometer amplifier drifts slightly, the dark count will still be above 0. If the offset drifts to a negative value, a reading of the dark count will show nothing on the display - the display will be dark.

The gain of the voltage-to-frequency converter has three selectable settings of 1, 10 and 100. Based on a selected gain of 10, the output frequency of the voltage-to-frequency converter is equal to

$$F_{out} = E_{out} * 3 \times 10^4 \text{ Hz/V}$$

where E_{out} is the output voltage from the electrometer stage. The maximum output frequency is about 15KHz before saturation .

Figure 2.3 shows a functional diagram of the signal processing circuit and Figure 2.4 shows the placement of the front panel controls.

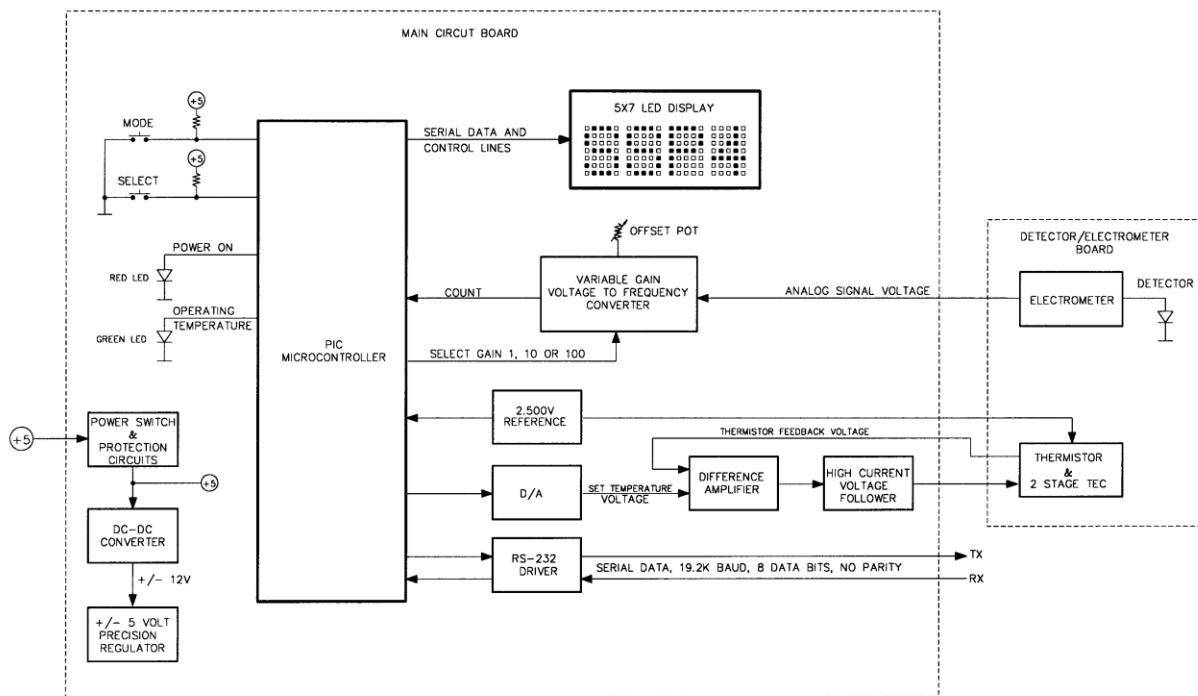


Figure 2-3. Signal Processing Diagram

SECTION 3.0

OPERATING PROCEDURE

3.1 CHECK-OUT LIST

Remove the filter slider and clean filters, if necessary, with a cotton swab dipped in alcohol or lens cleaning fluid. Do NOT rub hard.

Before taking readings, turn the photometer on and allow at least 10 minutes warm-up time at observatory temperature. The green TEMP LED will light up in approximately 1 minute after the unit is turned on. This indicates that the detector is at the default operating temperature of -25°C . It is suggested that the operating temperature be changed to at least -35°C or -40°C if a cooler ambient temperature condition will allow it. See Figure 3-1.

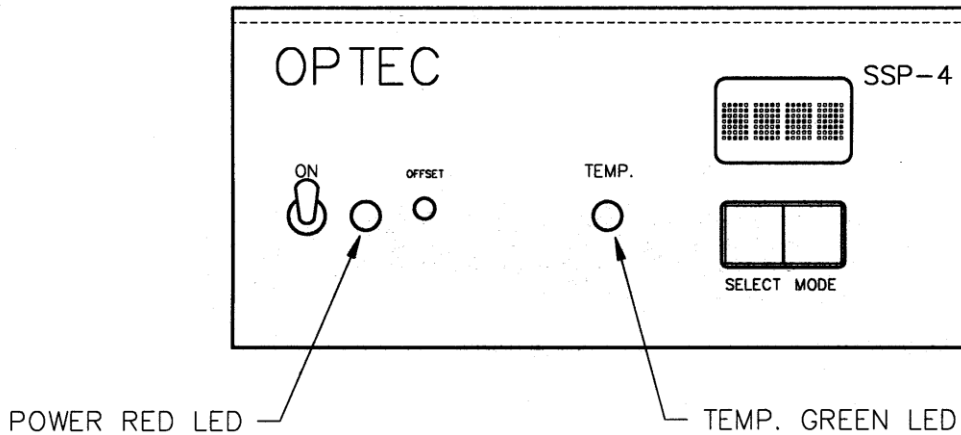


Figure 3-1. Front Panel Controls

When powered up, the SSP-4 is waiting to connect to the PC running SSP4DATA.EXE or another interface program using a serial interface. In this state, the integration time is set to 0.001 second so that any characters sent on the serial interface to the SSP-4 will not be lost. In order to use the photometer manually, the integration (INTG) time needs to be set to 1, 5, 10 or 30 seconds using the 2-Button interface. See Section 3.3.

After warm-up, observe that the count with the mirror down (no light on detector) is within the range of 3 to 7 with GAIN and INTG set at 1. If reading is not within this range, adjust the offset pot with a small screwdriver until the correct reading is obtained.

Light energy from any observatory red light will be a serious source of error for this photometer. Tungsten lamps are a rich source of IR in the spectral band that this instrument is most sensitive to. Even interior observatory surfaces which are dimly illuminated by the red light and near the front of the telescope will affect the reading substantially. What might appear as a good black paint in the visible spectrum may appear gloss white in the J and H bands. Before taking any readings with the SSP-4, it is recommended that the user experiment with the illumination in the observatory to gauge the effect it has on the count. Tungsten lamps with a thick heat absorbing filter or florescent lamps with a red filter are suggested for use as night-lights around the telescope. Red LEDS would also be a good choice since they have no IR emissions. One other note based on experience, the use of black vinyl electrical tape to provide a light seal is an exercise in futility. Aluminum foil duct tape is best for sealing any light leaks.

3.2 USING THE PHOTOMETER

With the mirror down, site the star or sky region in the center of the reticule. After confirming that the telescope is tracking properly, carefully flip the mirror up and record the readings.

To take a star or sky brightness measurement, three consecutive readings of 10 seconds integration time (INTG set for 10) each are normally taken. Always ignore the first reading since the mirror can never be flipped up exactly at the beginning of a new 10-second cycle. After seeing the first count displayed, record the next three.

After the reading sequence is completed, return the mirror to the viewing position and confirm that the star is still centered properly in the reticule. Normally, if the star is within a circle of 0.35 radius of the scribed ring center, the detector has collected more than 99% of the star's light. This rule of thumb does depend on seeing quality.

At this point, the user has successfully completed making a reading and is referred to other sources of information about stellar photometry.

3.3 THE 2-BUTTON INTERFACE

Integration time, voltage-to-frequency gain and detector operating temperature can be selected using the 2-button control. In order to get to the menu of selections, hold down the MODE key until "STOP" is displayed. If the photometer is in the process of taking a count with a long integration time, it will be necessary to hold down the key until the end of the process. "STOP" is displayed for 1 second and replaced by a "Y N" over the SELECT and MODE buttons. If no action is taken for 5 seconds or the MODE key is pressed, the program is returned to the normal operating loop and a new count is initiated. If the SELECT key is pressed, the program is put into the menu routine. See figure 3-2 for a guide to navigate the flow chart of all possible selections.

difference. This method is used by many members of the IAPPP and is recommended for novice users.

The reticule and detector are critically aligned at the factory and the user should make no adjustment. If the eyepiece is removed from its mount it may be necessary to realign the detector that will probably have to be done at Optec. If dust on the reticule is troublesome, remove it by blowing air (canned air for camera cleaning is suggested) through the 1.25-inch snout.

If the reticule ring needs to be adjusted in brightness, the circuit board mounted potentiometer located on the bottom right corner of the main circuit board can be adjusted. Use a small screwdriver to turn the control CCW to brighten the reticule or CW to dim it.

SECTION 4.0

PC SERIAL INTERFACE AND COMMANDS

4.1 PC (RS-232) SERIAL COMMUNICATIONS

The SSP-4 provides a serial communications feature as standard for this model. Using simple ASCII commands, the SSP-4 can be commanded to select gain, integration time, detector operating temperature and report the count. The RS-232 interface operates at 19.2 K baud with 8 data bits, one stop bit and no parity.

Optec has developed a user interface program called SSP4DATA.EXE that can control the instrument and record data in standard text format using the serial link. This program is supplied with the SSP-4 and instructions for its use can be found in the HELP file on the distribution disk. The latest version of SSP4Dataq can be downloaded from the Optec web site at: www.optecinc.com. Look for the Software Download link on the SSP-4 pages.

4.2 CONNECTING THE SSP-4 TO THE PC

For the physical wiring connection between the PC and the SSP-4, a DB-9 female/female null modem cable is suggested. These are commonly available from most PC accessory suppliers or from Optec (Stk. No. 17154, 10 foot cable). The RS-232 implementation used with the SSP-4 is a simple 3-line interface using RX, TX, and GND.

4.3 COMMUNICATIONS PROTOCOL

The remote PC communication program should be set for 19.2 K baud rate with 8 data bits, 1 stop bit, and no parity (8N1). The SSP-4 is preset for these values and will not respond to other settings and cannot be changed. **Be sure to set the baud rate to 19.2K BAUD before attempting communication with the SSP-4.** Tables 4-1 through 4-7 below describe in detail the commands used to control and communicate with the SSP-4. To establish communications a SSTART command must be sent along the serial line to the SSP-4. This command should consist of the ASCII serial string "SSTART" (without the quotes). If a partial command string is received, the SSP-4 microcontroller will timeout after only a few milliseconds and may not parse the entire command string properly. Once the SSTART command has been received and accepted by the SSP-4, a return character of "!" (followed by a CR/LF) will be sent back to the PC communications program. None of the other commands will work before the SSTART command has properly initialized the serial connection.

Command	Return
SSTART	! CR LF
<p><i>Function:</i></p> <p>This command initializes the serial connection between the PC and the SSP-4. SSTART causes the SSP-4 program to enter into the main serial loop which checks for additional inputs along the serial interface. A successful return from this command (!) is required before the SSP-4 will accept any other user commands.</p>	
<p><i>Warning:</i></p> <p>If “!” is not returned repeat SSTART. There is a possibility that the command will timeout. The INTG setting for the instrument must be PC for serial control to be enabled.</p>	

Table 4-1. Enter SSP-4 Serial Mode Command.

Command	Return
SGAINx	none
<p><i>Function:</i></p> <p>This command sets the gain of the voltage-to-frequency converter. The value of x is either 1 for a gain of 100X, 2 for 10X or 3 for 1X gain.</p>	
<p><i>Warning:</i></p> <p>No values for x other than 1, 2 or 3 are acceptable.</p>	

Table 4-2. Set Gain Command.

Command	Return
Slwxyz	none
<p><i>Function:</i></p> <p>This command sets the integration time for acquiring a count from the voltage-to-frequency converter. The four-digit integer value of wxyz is equal to the total integration time in units of 0.01 seconds. Thus, a value of 0100 will set the integration time to 1.00 seconds.</p>	
<p><i>Warning:</i></p> <p>Values less than 0100 (1.00 seconds) are of limited value because the rise time and noise of the system electronics demand longer integrations. The maximum count that can be retained is 2 bytes wide (2^{16}), which will limit long integration times.</p>	

Table 4-3. Set Integration Time Command.

Command	Return
SCOUNT	C=vwxyz CR LF
<p><i>Function:</i></p> <p>This command starts an integration for the selected integration time and gain settings. The vwxyz output value is the integer count. The left side of the value is padded with zeros so that a five-character value is always sent. Thus, a count of 100 is sent as C=00100 CR LF.</p>	
<p><i>Warning:</i></p> <p>The maximum value that can be sent is two bytes wide or 65536 decimal. During the integration time, the SSP-4 will not accept any serial inputs.</p>	

Table 4-4. Start Count Command

Command	Return
STEMxy	none
<i>Function:</i>	
<p>This command sets the detector operating temperature in degrees celsius below 0. Thus, a xy value of 05 will set the detector to -5° C.</p>	
<i>Warning:</i>	
<p>Only integer values from 00 to 40 are acceptable.</p>	

Table 4-5. Select Detector Temperature

Command	Return
SFTEMP	F=xy.z CR LF
<i>Function:</i>	
<p>This command gets the detector operating temperature in degrees centigrade below 0 and sends it on the serial interface. Resolution is approximately 0.2° C based on the 8-bit A/D conversion algorithm. Thus, an output value of F=35.4 CR LF is an operating detector temperature of -35.4° C.</p>	
<i>Warning:</i>	
<p>Only values from 00.0 to 44.9 are reported.</p>	

Table 4-6. Get Detector Temperature Command

Command	Return
SEXITn	"END" CR LF
<i>Function:</i>	
<p>This command exits the serial mode and returns control of the instrument to the 2-button interface. The value of padding character n can be anything.</p>	

Table 4-7. Exit Serial Mode Command

SECTION 5.0

TROUBLE-SHOOTING GUIDE

The following common problems and solutions have been collected over the years from our customers and our attempts to solve their instrument problems. Before calling us, read through these and relevant sections of this manual to see if an easy solution exist for your errant photometer.

- 1) **Unit has been turned on and left to warm up for the proper time but no display is seen unless light is incident on the detector.**

With a small screwdriver adjust the offset control pot on the front panel. (See Figure 2-7.) With no light incident on the detector, rotate the control pot CCW for at least 20 turns to make sure a display value is seen and then rotate CW until a count of 5 is obtained with the GAIN and TIME set for 1.

- 2) **The dark count (no light on the detector) appears to drift with time and temperature beyond what you have been accustomed to.**

This could be a serious problem if the drift is due to a break in the moisture seal protecting the detector/electrometer assembly. The unit should always be kept in a dry and warm environment when not used. Place the unit in a sealed container with about 4 ounces of activated desiccant for a period of 48 hours. If desiccant is not available, use a 100-watt spotlight placed about 2 feet from the unit for a similar length of time. Allow the unit to come to ambient temperature before measuring the drift. If the problem does not disappear or reduce to acceptable levels, it will have to be returned to Optec for repair.

- 3) **The unit appears to give much higher than expected counts every once in a while.**

If the unit is powered by the adapter, any surge in the power line may cause an increase in the number of counts for the integration interval. Refrigerator, compressors, dome motors, and telescope position servos could easily be the cause of this problem. Vibration and strong radio signals may also be the cause of the problem.

- 4) **The night appears clear but the star count is diminishing with time faster than expected due to changing extinction conditions.**

A common problem especially with Celestron and Meade telescopes is that a nearly invisible film of condensed water will develop on the corrector plate or main mirror during the night if the dew point is high enough. Usually this fog film can only be seen when a strong light is projected down the front of the telescope and the optics carefully inspected. A hair dryer is the only cure. "Dew-zappers", low wattage heaters designed to fit over the front cell, are now commonly available to avoid this condensation problem.

- 5) **As the star approaches the edge of the detector the count begins to fall but it looks as if the star is still completely within the ring as seen in the eyepiece.**

The stellar light profile (energy vs. radius from the center of the star) is much larger than what is seen. On a good night a seeing disk could appear to be about 2 arc-second in diameter. However, to capture over 99% of the energy a detector diameter (field aperture) of over 20 arc seconds is needed. A hazy night or a night with much greater turbulence could increase the stellar profile many more times. Thus, care must be taken to keep the star from drifting near the edge of the detector since some of the incident energy will be lost.

SECTION 6.0

SPECIFICATIONS

DETECTOR (G5851-203)

Type	InGaAs PIN-photodiode
NEP	$2 \times 10^{-14} \text{ W}/\sqrt{\text{Hz}}$ (typical) at -35 C
Detector Size	0.3mm diameter (1.0mm diameter optional)
Spectral Range (5% points)	900 to 1850nm
Shunt Resistance	$>0.2\text{G } \Omega$ (typical) at -35 C
Peak Response	1.2 A/W at 1750 nm

ELECTROMETER (AD8552)

Type	Current-to-Voltage
Bias Current	10 pA typical
Offset Voltage	1 μV typical
Open Loop Gain	120db Min.
Closed Loop Gain (Rf)	1×10^9
Input Voltage Noise	0.32 μV (p-p) (0 to 1Hz)
Input Current Noise	2 f /Hz ^{1/2} (10Hz)
Maximum Output Voltage	2.7 V

A/D CONVERTER (LM231)

Type	Voltage-to-Frequency
Full Scale Frequency	10 KHz
Full Scale Input Voltages	-33 mV (100 SCALE) -330 mV(10 SCALE) -3.3V (1 SCALE give a 8KHz maximum output)
Linearity	$<0.3\%$
Offset	$<.5\text{mV}$ (adjustable to 0)

MICROCONTROLLER

Type	PIC16C73B-20I/SP
EPROM	4K x 14
RAM	192 x 8
I/O Lines	22
8-bit A/D	5-Ch
Operating Temperature	-40° to $+80^\circ \text{ C}$

POWER SUPPLY

Type	Switching
Output	+5V DC, 3A regulated
Input	100-120 VAC, 50-60 Hz, 0.4A
Output Connector	2.1mm Power Plug, 6' cord

EYEPIECE

Focal Length	25 mm
Type	Ramsden
Reticule Illumination	Green LED
Field of View (80 inch FL)	0.4 degrees

MECHANICAL

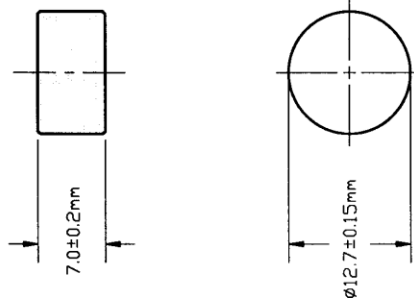
Body Material	Aluminum 6061-T6 alloy
Finish	Bright Dip Black Anodized
Overall Length	9 inches (tip to tip)
Weight	2 lbs. 14 oz.
Telescope Coupler	1.25 inch (standard)

SECTION 7.0

J & H FILTERS

SPECIFICATIONS J & H FILTERS

FILTER NAME	PART NUMBER	CENTER WAVELENGTH	BANDWIDTH FWHM	TRANSMISSION MINIMUM
J	4139	1.250±0.042µm	0.200±0.040µm	60%
H	4140	1.650±0.045µm	0.300±0.060µm	60%
GENERAL SPECIFICATIONS				
DIAMETER				
φ12.7±0.15mm				
TOTAL THICKNESS				
7.0±0.2mm				
EDGE				
SEALED WITH METAL RING OR RUBBER COATING				
SURFACE QUALITY				
60-40 SCRATCH-DIG				
FLATNESS				
5 WAVES WITHIN CLEAR APERTURE				
WEDGE				
NOT TO EXCEED 0.05mm				
CHAMFER				
SLIGHT PROTECTIVE CHAMFER				
CEMENTING QUALITY				
BUBBLES & STRIATIONS SHOULD NOT BE VISIBLE TO THE UNAIDED EYE WITHIN CLEAR APERTURE				
BLOCKING				
LESS THAN 0.001 FROM 0.70 to 2.1 µm OUTSIDE OF PASSBAND				
CLEAR APERTURE				
10.0 mm MINIMUM				
COATING SPECS.				
FILTER COATING IN ACCORDANCE WITH MIL-C-48497A				
SUBSTRATE SPECS.				
SUBSTRATE IN ACCORDANCE WITH MIL-D-13830A				



TOLERANCE .XX ± .XXX ±	CONTRACT FILTERS	<i>OPTEC, Inc.</i>	
MATERIAL	REVISION 9/21/2001 3/1/2002		
FINISH	J & H FILTERS FOR SSP-4		
		SCALE: 2X	NO: 17-04016

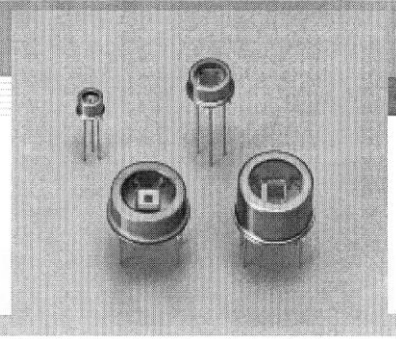
Figure 7-1. J & H Filter Specifications.

Appendix A

InGaAs PHOTODIODE

InGaAs PIN photodiode G8421/G8371/G5851 series

Long wavelength type



Features

- Long cut-off wavelength: 1.9 μm
- 3-pin TO-18 package: low price
- Thermoelectrically cooled TO-18 package: low dark current
- Active area: $\phi 0.3$ to $\phi 3$ mm

Applications

- Optical power meter
- Gas analyzer
- NIR (near infrared) photometry

Specifications / Absolute maximum ratings

Type No.	Dimensional outline/ Window material	Package	Cooling	Active area (mm)	Absolute maximum ratings				
					Thermistor power dissipation (mW)	TE-cooler allowable current (A)	Reverse voltage V_R (V)	Operating temperature T_{opr} ($^{\circ}\text{C}$)	Storage temperature T_{stg} ($^{\circ}\text{C}$)
G8421-03	①	TO-18	Non-cooled	$\phi 0.3$	-	-	2	-40 to +85	-55 to +125
G8421-05				$\phi 0.5$					
G8371-01				$\phi 1$					
G8371-03				$\phi 3$					
G5851-103	③	TO-8	One-stage TE-cooled	$\phi 0.3$	0.2	1.5	2	-40 to +70	-55 to +85
G5851-11				$\phi 1$					
G5851-13				$\phi 3$					
G5851-203				$\phi 0.3$					
G5851-21	④	TO-8	Two-stage TE-cooled	$\phi 1$	1.0				
G5851-23				$\phi 3$					

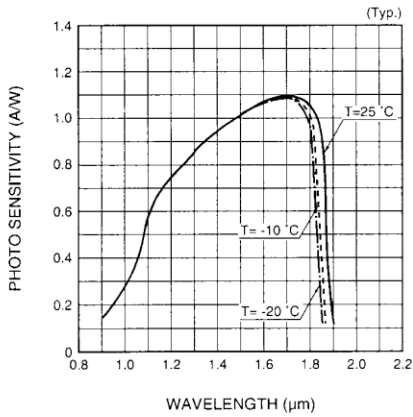
Electrical and optical characteristics (Typ. unless otherwise noted)

Type No.	Measurement Condition	Spectral response range λ (μm)	Peak sensitivity wavelength λ_p (μm)	Photo sensitivity S $\lambda = \lambda_p$ (A/W)	Dark current I_D $V_R = 1$ V		Cut-off frequency f_c $V_R = 1$ V $R_L = 50 \Omega$ $f = 1$ MHz -3 dB (MHz)	Terminal capacitance C_t $V_R = 1$ V $f = 1$ MHz (pF)	Shunt resistance R_{sh} $V_R = 10$ mV (M Ω)	D^* $\lambda = \lambda_p$ ($\text{cm} \cdot \text{Hz}^{1/2} / \text{W}$)	NEP $\lambda = \lambda_p$ ($\text{W} / \text{Hz}^{1/2}$)
	Element temperature ($^{\circ}\text{C}$)				Typ. (nA)	Max. (nA)					
G8421-03	25	0.9 to 1.9	1.75	1.1	30	300	100	8	1.5	5×10^{11}	9×10^{-14}
G8421-05					50	500	80	20	1		1.5×10^{-13}
G8371-01					100	1000	40	80	0.5		2×10^{-13}
G8371-03					2000	20000	3	800	0.05		8×10^{-13}
G5851-103	-10	0.9 to 1.87	1.75	1.1	3	30	100	8	15	1.5×10^{12}	3×10^{-14}
G5851-11					10	100	40	80	5		6×10^{-14}
G5851-13					200	2000	3	800	0.5		2×10^{-13}
G5851-203	-20	0.9 to 1.85	1.75	1.1	1.5	15	100	8	35	2.5×10^{12}	2×10^{-14}
G5851-21					5	50	40	80	10		4×10^{-14}
G5851-23					100	1000	3	800	1		1.5×10^{-13}

SOLID STATE DIVISION

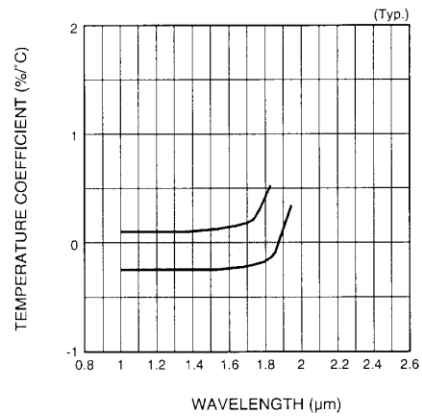
HAMAMATSU

■ Spectral response



KIRDB0221EA

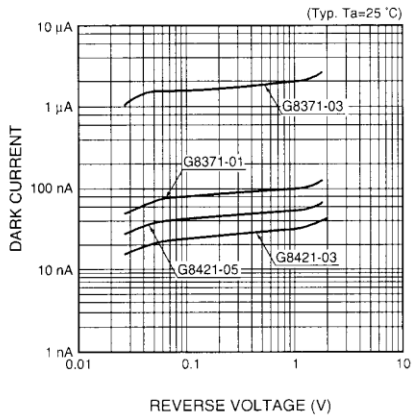
■ Photo sensitivity temperature characteristic



KIRDB0208EA

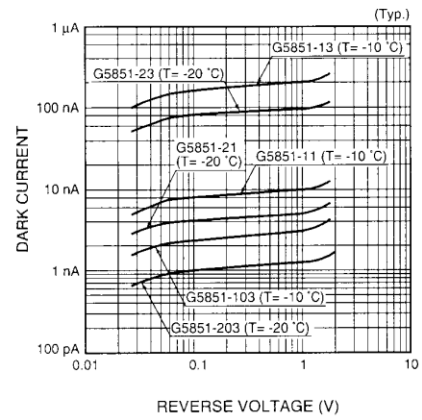
■ Dark current vs. reverse voltage

Non-cooled type



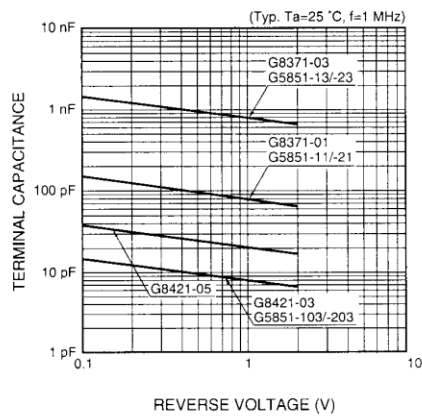
KIRDB0232EB

TE-cooled type



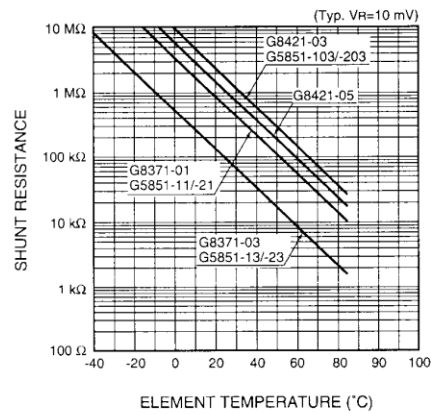
KIRDB0232EA

■ Terminal capacitance vs. reverse voltage



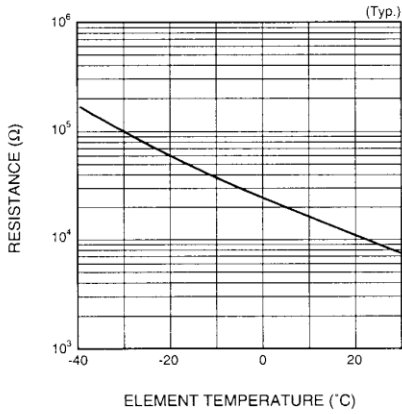
KIRDB0233EA

■ Shunt resistance vs. element temperature



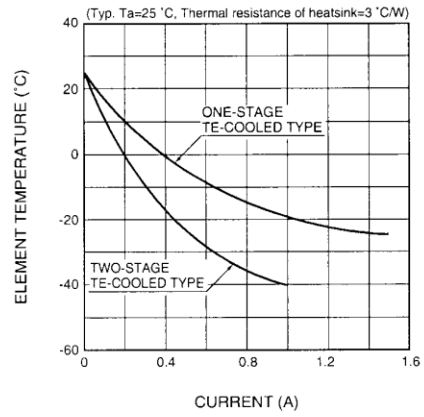
KIRDB0234EA

■ Thermistor temperature characteristic



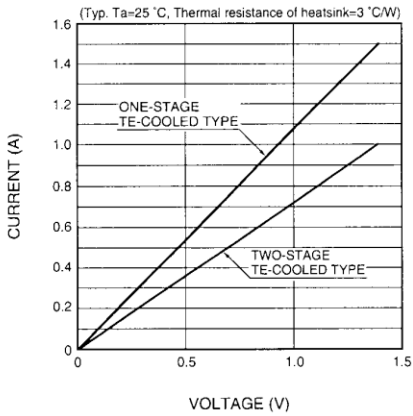
KIROB0116EA

■ Cooling characteristics of TE-cooler



KIRD60231EA

■ Current vs. voltage characteristics of TE-cooler

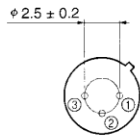
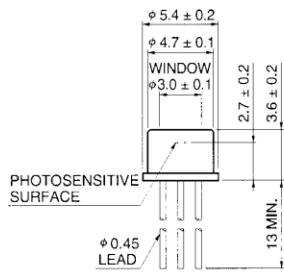


KIROB0115EA

InGaAs PIN photodiode G8421/G8371/G5851 series

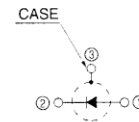
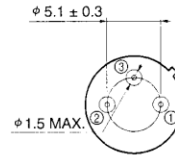
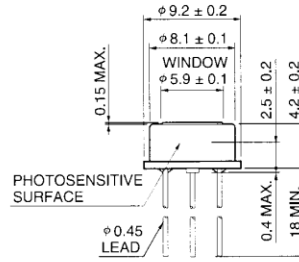
■ Dimensional outlines (unit: mm)

① G8421-03/-05, G8371-01



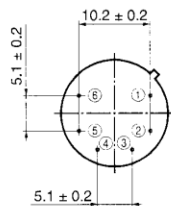
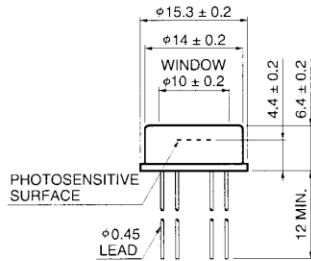
KIRD40150EA

② G8371-03



KIRD40151EA

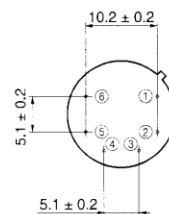
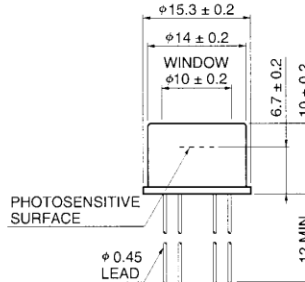
③ G5851-103/-11/-13



- ① DETECTOR (ANODE)
- ② DETECTOR (CATHODE)
- ③ TE-COOLER (-)
- ④ TE-COOLER (+)
- ⑤⑥ THERMISTOR

KIRD40029EB

④ G5851-203/-21/-23



- ① DETECTOR (ANODE)
- ② DETECTOR (CATHODE)
- ③ TE-COOLER (-)
- ④ TE-COOLER (+)
- ⑤⑥ THERMISTOR

KIRD40031EB

HAMAMATSU

HAMAMATSU PHOTONICS K.K., Solid State Division

1126-1 Ichino-cho, Hamamatsu City, 435-8558 Japan, Telephone: (81) 053-434-3311, Fax: (81) 053-434-5184, <http://www.hamamatsu.com>

U.S.A.: Hamamatsu Corporation, 360 Foothill Road, P.O. Box 6910, Bridgewater, N.J. 08807-0910, U.S.A., Telephone: (1) 908-231-0960, Fax: (1) 908-231-1218

Germany: Hamamatsu Photonics Deutschland GmbH, Arzbergerstr. 10, D-82211 Herrsching am Ammersee, Germany, Telephone: (49) 08152-3750, Fax: (49) 08152-2658

France: Hamamatsu Photonics France S.A.R.L., 8, Rue du Saulis Traou, Parc du Moulin de Massy, 91882 Massy Cedex, France, Telephone: 33-(1) 69 53 71 00, Fax: 33-(1) 69 53 71 10

United Kingdom: Hamamatsu Photonics UK Limited, 2 Howard Court, 10 Twin Road, Welwyn Garden City, Hertfordshire AL7 1BW, United Kingdom, Telephone: (44) 1707-294888, Fax: (44) 1707-325777

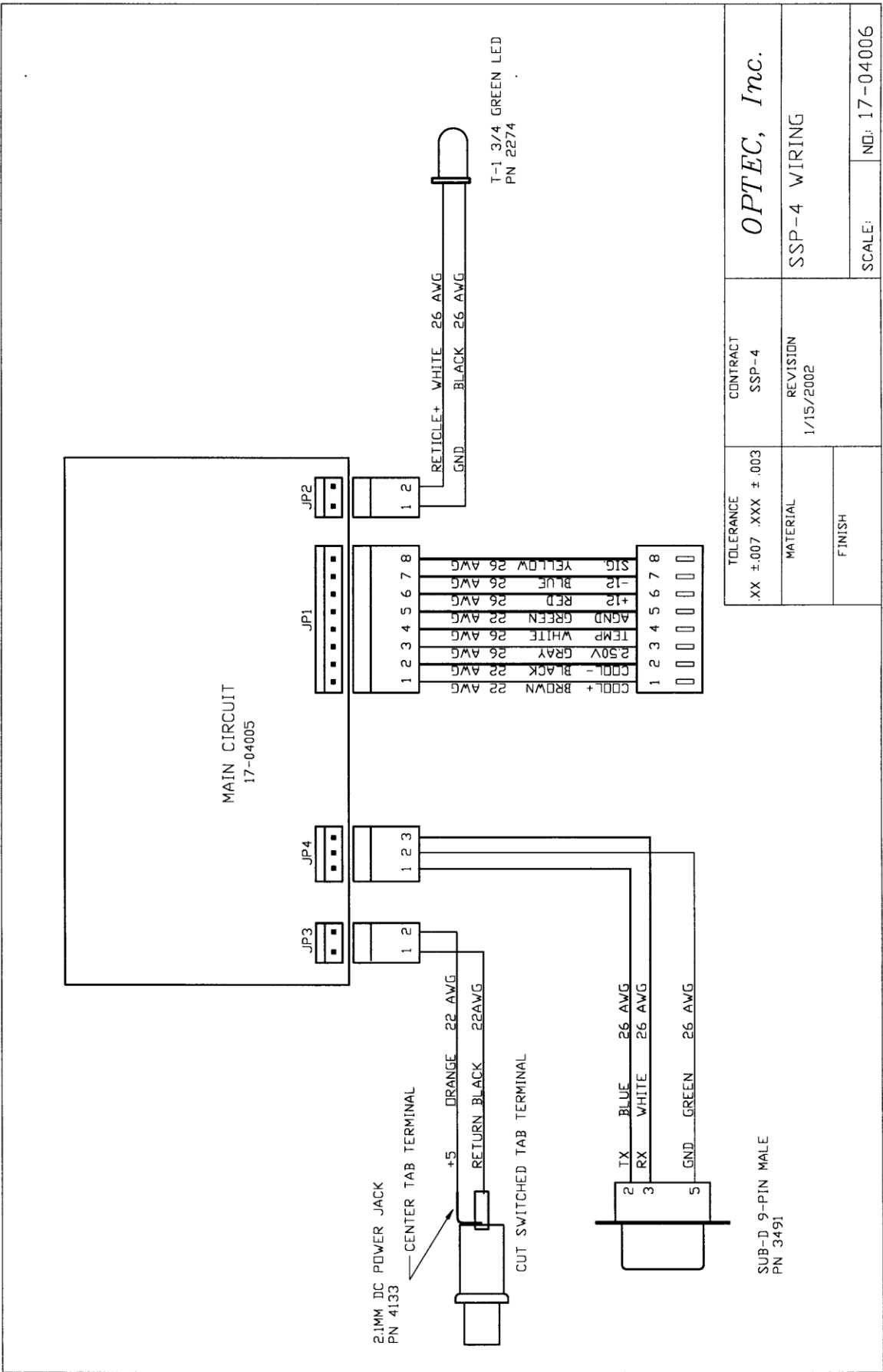
North Europe: Hamamatsu Photonics Norden AB, Smidesvägen 12, SE-171 41 Soina, Sweden, Telephone: (46) 8-509-031-00, Fax: (46) 8-509-031-01

Italy: Hamamatsu Photonics Italia S.R.L., Strada della Moia, 1/E, 20020 Arese, (Milano), Italy, Telephone: (39) 02-935-81-733, Fax: (39) 02-935-81-741

Cat. No. KIRD1046E02
Jan.2003 DN

Appendix B

WIRING DIAGRAM



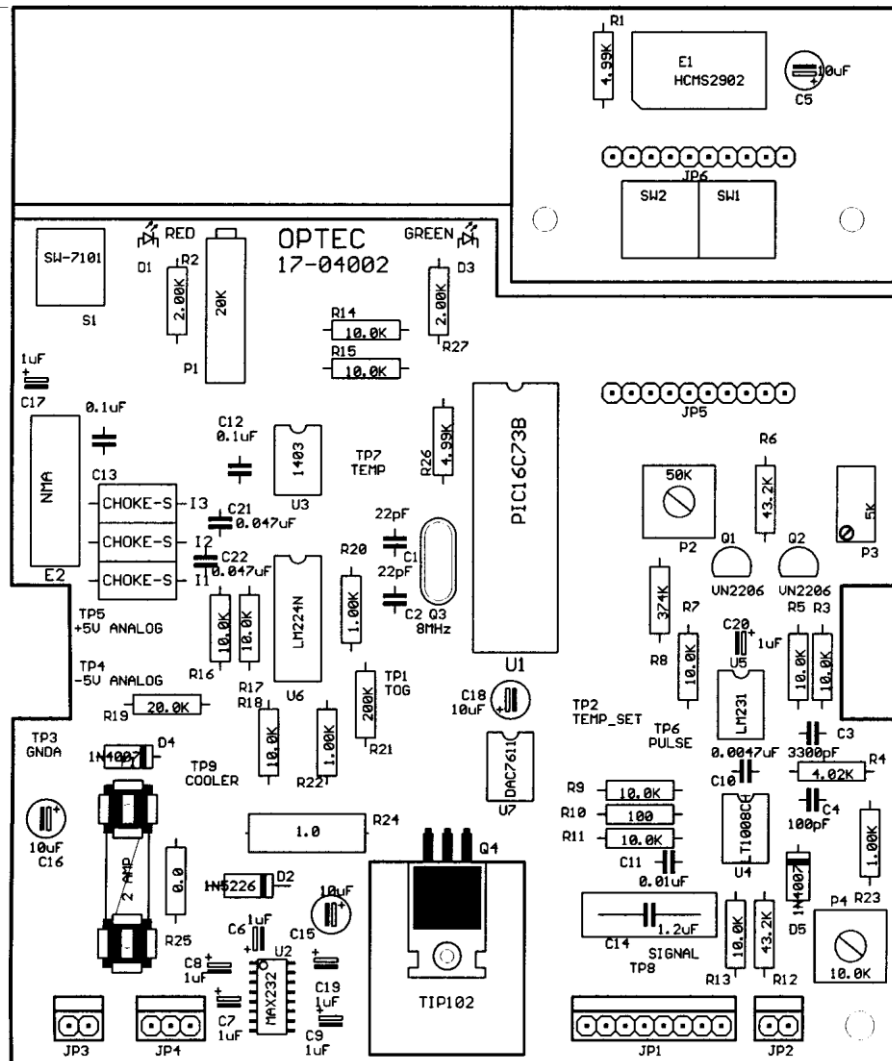
TOLERANCE	CONTRACT	OPTEC, Inc.
.XX ±.007 .XXX ± .003	SSP-4	
MATERIAL	REVISION	SSP-4 WIRING
FINISH	1/15/2002	
SCALE:		ND: 17-04006

SUB-D 9-PIN MALE
PN 3491

Appendix C

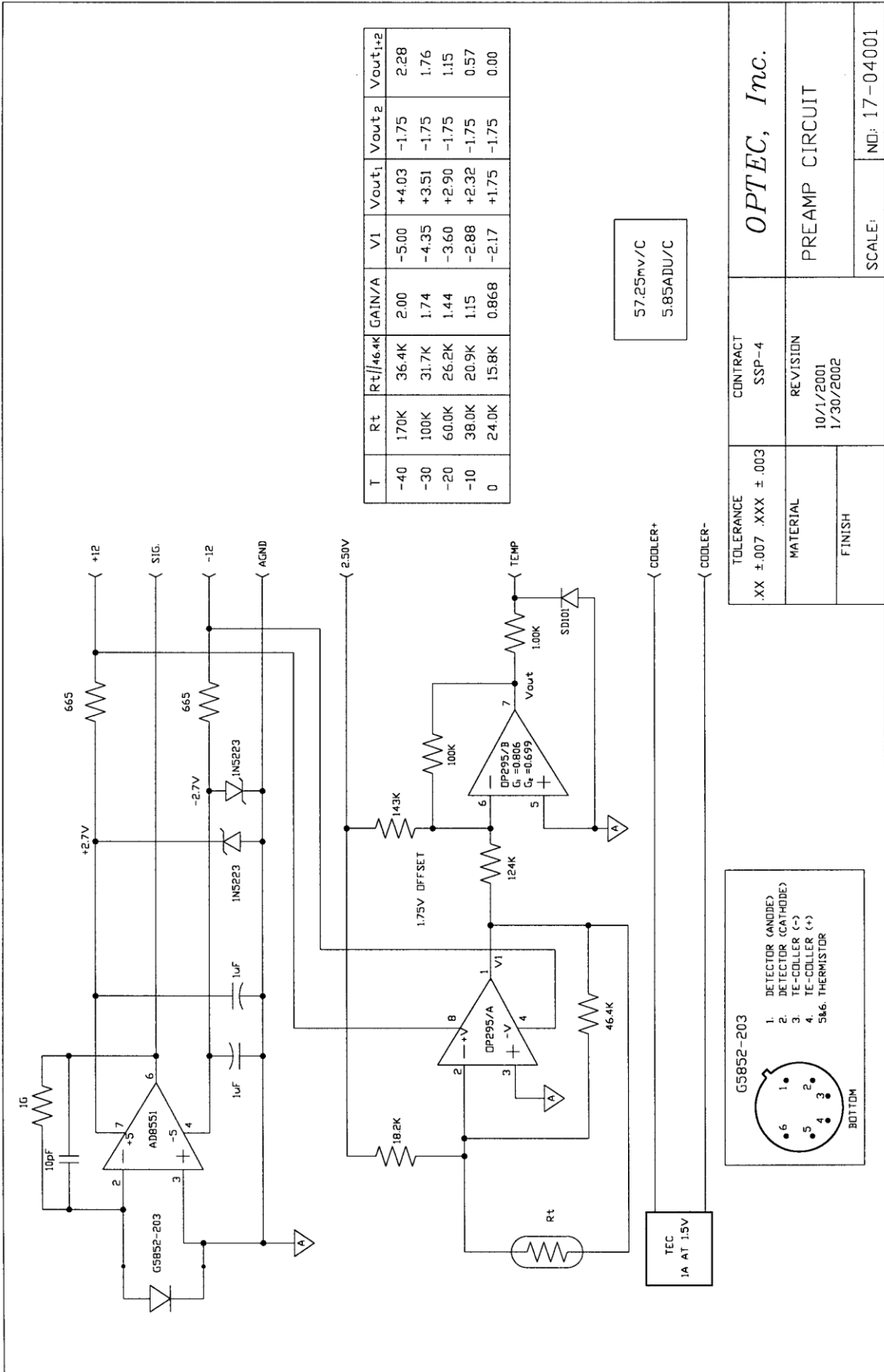
COMPONENT LAYOUT & CIRCUIT DIAGRAMS

5.50



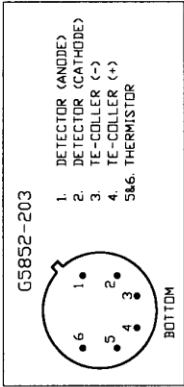
4.60

Figure C-1. SSP-4 Circuit Board Component Layout.

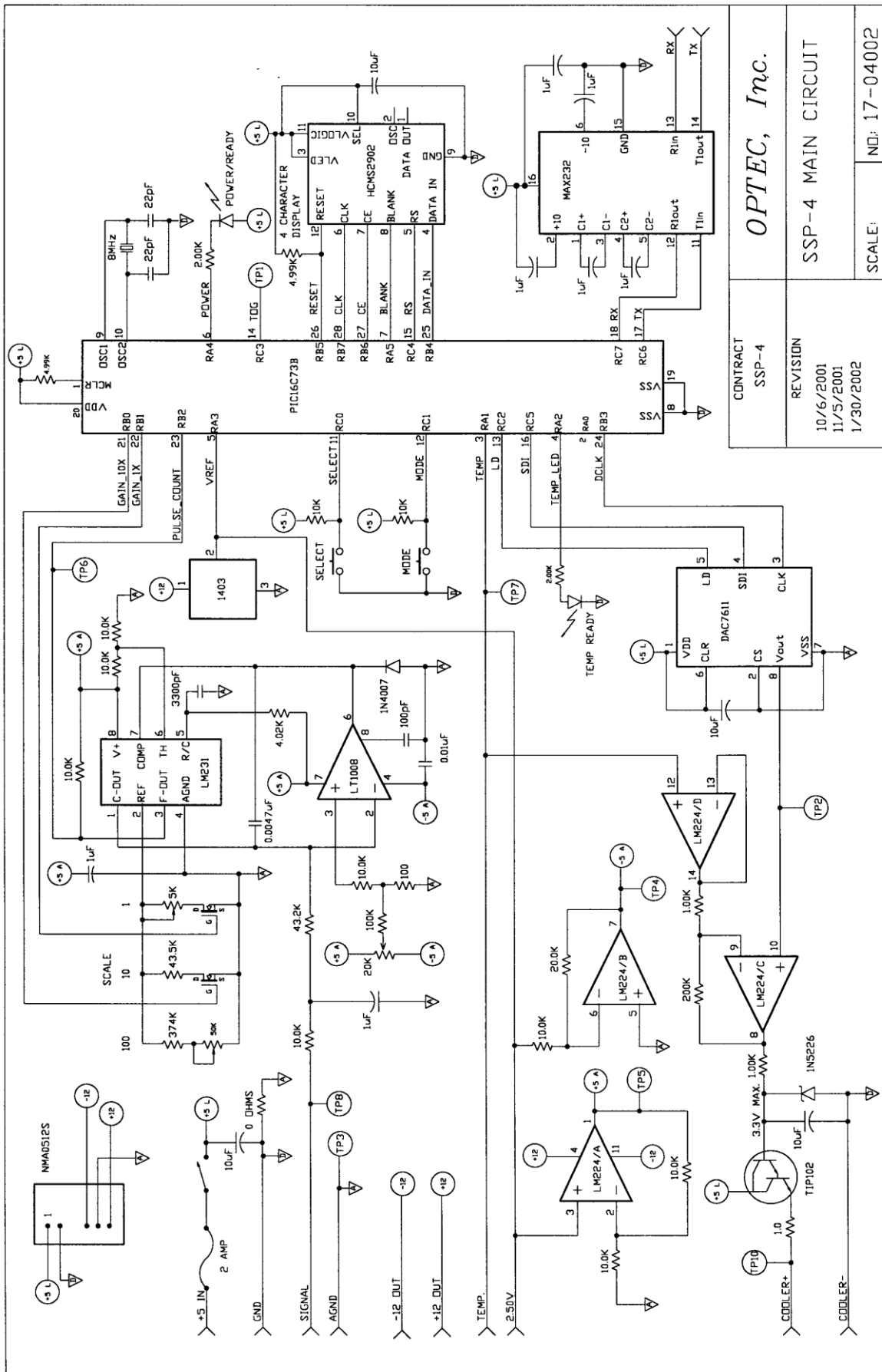


T	Rt	Rt//46.4K	GAIN/A	V1	Vout1	Vout2	Vout1+2
-40	170K	36.4K	2.00	-5.00	+4.03	-1.75	2.28
-30	100K	31.7K	1.74	-4.35	+3.51	-1.75	1.76
-20	60.0K	26.2K	1.44	-3.60	+2.90	-1.75	1.15
-10	38.0K	20.9K	1.15	-2.88	+2.32	-1.75	0.57
0	24.0K	15.8K	0.868	-2.17	+1.75	-1.75	0.00

57.25mv/C
5.85ADU/C



TOLERANCE	CONTRACT	OPTEC, Inc.	
.XX ±.007 .XXX ±.003	SSP-4	PREAMP CIRCUIT	
MATERIAL	REVISION	SCALE:	
FINISH	10/1/2001 1/30/2002	NO: 17-04001	



CONTRACT	SSP-4
REVISION	10/6/2001 11/5/2001 1/30/2002
SCALE:	NO: 17-04002

OPTEC, Inc.

SSP-4 MAIN CIRCUIT

Appendix D

SAMPLE DATA ENTRY FORM

The sample report form printed on the next page is useful for recording data when using the differential photometry technique. Basically, this method is to compare the brightness of the variable star to that of a nearby comparison star, which is known to have no variability. No attempt is made here to educate the user in all aspects of proper observing procedure and the associated data reduction. A number of texts about astronomical photometry are available which describe the proper methodology.

Figure D-1 shows a sample observing report for the night of September 18-19, 2001.

VAR..__NOVA_____	DOUBLE DATE __MARCH 14-15, 2002__
COMP.___HD 182618_____	PAGE ____ OF ____

OBSERVER __J.P. _____	NOTES _____
TELESCOPE __MEADE 10" f/10 LX-200_____	_____
CONDITIONS __GOOD_____	_____

UT	STAR	FILTER	SCALE	TIME	COUNT	SKY	COMMENTS
1::21	COMP	J	10	10	894	402	
					891	402	
					594	401	
1:24	NOVA	J	10	10	509		
					507		
					510		
1::29	COMP	J	10	10	881		
					880		
					877		
					.		
					.		
					.		

Figure D-1. Sample Data Entry Using the Report Form.

